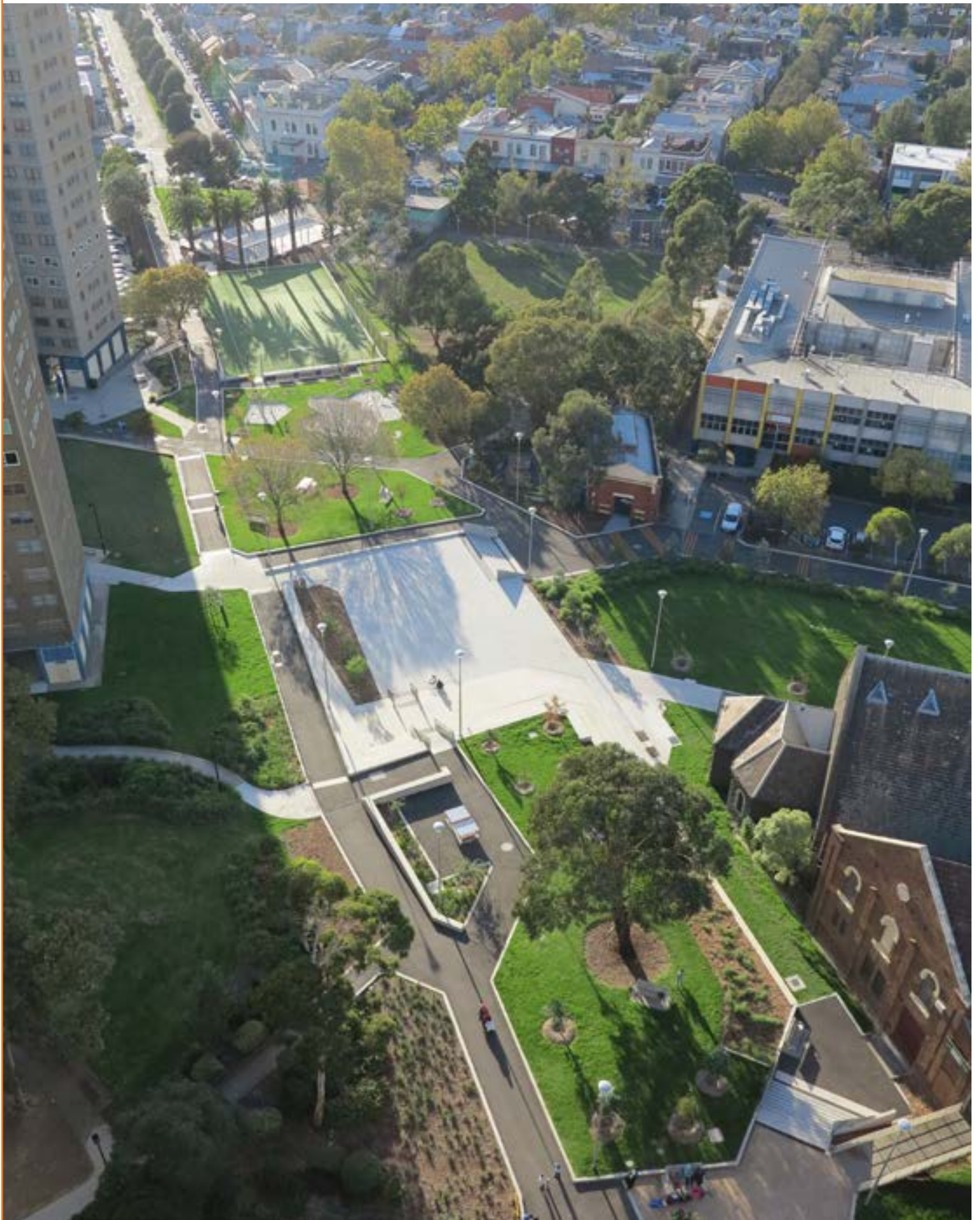


Sustainability is at our core

SUSTAINABILITY REPORT



OUR VISION

To create a better built environment that provides best practice quality time and cost effectiveness for our clients.

At 2Construct, we do business in an ethically, socially and environmentally responsible way

Sustainable practices are at the core of what we do.

And to us, sustainability is about more than creating positive outcomes for the environment. It's about working with our clients and suppliers to ensure economic development is sustainable while protecting the environment and achieving social enrichment in the communities in which we live and work.

We believe that by reducing negative impacts from our practices, we will create value and benefit from sustainability.

ACHIEVING SUSTAINABLE ENVIRONMENTAL OUTCOMES

To help Victoria prepare for the challenges that climate change presents, we're doing our part to actively reduce carbon emissions during the construction process.

We're also contributing to resilient designs that will adapt to a changing climate.

To address and combat the effects of climate change, we're:

- using energy efficiently
- targeting 80% recyclable waste
- managing waste during construction
- operating in line with environmental protection laws
- subscribing to a circular economy
- minimising impacts on native animals and fauna
- maximising the harvest and reuse of water.

CONSUMING LESS

We've adopted strategies to avoid unnecessary consumption and manage demand, including:

- selecting major materials with environmental labels or from sustainable supply chains
- setting benchmarks to track and report on performance
- embedding energy, water, material and waste reduction initiatives into project design, construction and operation
- reducing the use and lifecycle impacts of all materials such as concrete, asphalt and steel.

SUPPORTING SUSTAINABLE BUSINESS

We foster a viable market for sustainable products and services by supporting business and industry groups that show innovation in sustainability. Our social conscience drives our passion for the wellbeing and development of our community.

Achieving social and economic goals and addressing community issues is part of how we do business. We:

- support new approaches to address ethical and sustainable procurement
- procure sustainable-labelled products from sustainable supply chains under materials credit schemes
- continue to encourage innovation and develop new forms of partnership and service delivery models
- increase the representation of local, target communities for sustainable inclusive employment pathways.

We actively pursue the procurement of goods and services from social enterprises. We canvass Supply Nation and Kinaway while tendering to involve Indigenous supply chains. We also use local content from project surrounds and districts to bring a social value to the local economy.

We encourage, support and respect diversity and differences to encourage growth and confidence—from our own team through to contractors, suppliers, and customers.

NORTH EAST LINK FORD PARK AND BINNAK PARK

The upgrade of Binnak Park and Ford Park's sport and recreation facilities form part of the North East Link Project.



Binnak Park's new pavilion includes:

- change rooms
- kitchen and servery
- social space
- equipment and store areas
- gym
- curator shed
- amenities.

Our scope of works at Ford Park includes:

- demolition of existing ovals to allow for the construction of a new central double-facing sporting pavilion servicing two ovals
- accommodating social spaces, office, meeting rooms, kitchen, servery, storerooms, change rooms and amenities
- hard and soft landscaping and car park.

For this project, we made a significant sustainability impact through our waste management practices

More than

90%
of materials
were recycled

during the project, including brick, concrete, steel, timber, cardboard, plastic and plasterboard.



YARRA VALLEY GRAMMAR ART, DESIGN AND TECHNOLOGY WING

The design of the Art, Design and Technology Wing incorporated:

- a digital photography studio
- photography printing areas
- visual communications studio
- textile studio
- senior 2D/3D art studio
- middle school studios
- flexible learning areas
- tech workshops
- design lab and studio
- machine rooms
- meeting rooms
- gallery

Our scope of works at Yarra Valley Grammar included:

- demolition of an existing car park
- removal of redundant services
- construction of a new two-level major school building.

The curvilinear facade and curtain wall system visually connects the new building with existing adjacent buildings. The external surrounding landscaping synthesises the building's main entrance and forecourt with the existing footpaths and landscaping.

ENVIRONMENTAL OUTCOME

By tracking the waste management, we found a typical month's recycling compared against sending it all to an average Australian landfill

35.44

tonnes of CO² into the atmosphere saved

200.68

trees planted

441,491

litres of water saved

157.53

cubic metres saved from landfill

46.44

kilo watt hours of electricity saved

1.79

cars removed from the road for a year

6136

litres of diesel oil saved



EDITHVALE LIFE SAVING CLUB (LSC)



The construction of the fit-for-purpose Edithvale Life Saving Club facility is a partnership between Kingston Council and the Victorian Government. The new facility was designed to ensure the club can continue to provide this vital community service each summer to its more than 22,000 Edithvale beach visitors.

The improved facilities provide much-needed extra storage and training space. Public facilities are split by the concourse from the lifesaving facilities on the other side and the floor above.

Edithvale has a strong club presence that is growing in numbers. The new building has helped ensure a faster response during emergency situations. It also continues to be a leader in multicultural engagement.

Edithvale continues its lifesaving training program with its Nipper Program for children aged 5 to 14 years. The introductory lifesaving program is about children participating in safe, fun and organised activities in a beach environment. This prepares them to be future lifesavers.

The club has a balanced membership that embraces diversity, including a large multicultural component. Some of the first lifeguards from multicultural backgrounds have committed to being lifesavers, improving their life skills and helping to improve education and safety among communities that do not have a strong background or knowledge of water safety.



The new building has helped foster greater community unity across training programs and increased membership between nippers to members



There have been notable achievements for the for the October 2020 to April 2021 patrol season since Edithvale's new facility was built, including:



4 + 8
major + minor
first aid cases



42
preventative actions



104
Nippers
(increase of 20%)



295
financial members
(increase of 23% on 2019-2020)



1,540
patrol hours
(increase of 45% on 2019-2020)



20,614
beach attendances
(increase of 107% on 2019-2020)

Data also attributable to the relaxing of COVID restrictions compared to the previous year.

NEILL STREET RESERVE, CARLTON



The City of Melbourne transformed the Neill Street Reserve between Lygon and Rathdowne Streets create a neighbourhood park for the Carlton public housing community.

The redeveloped area includes:

- two courts for games
- a community square
- open spaces for sitting and relaxing.

Our scope of works for this City of Melbourne project included:

- earthworks
- screw piles and concrete slabs for basketball and futsal courts
- reinforced concrete seating and retaining walls
- asphalt paths
- synthetic futsal surface

- playground
- stormwater drainage
- lighting and irrigation
- shelter structure
- feature panel and fencing
- sewer diversion
- soft landscaping with tree planting



SOCIAL IMPACT

For even greater social benefit and cohesion, we employed a public housing tenant throughout the project lifecycle. It has helped build confidence and employment for this social housing cohort



As a leader in our industry, we have a responsibility to our environment, to our employees and to the community at large



ACCREDITED GREENSTAR MEMBER

Achieving Green Star certification can deliver cost savings, support strategic procurement and deliver greater wellbeing, resilience and environmental outcomes among a range of other significant opportunities and benefits.

Green Star provides independent verification that industry-agreed best practice benchmarks have been met and encourages and rewards good design and operation. The rating system's flexibility enables projects of all types to be able to achieve certification.

use 66% less electricity than average Australian buildings

produce 55% fewer greenhouse gas emissions than average Australian buildings

use 51% less potable water than if they had been built to meet minimum industry requirements



ENVIRONMENTAL MANAGEMENT SYSTEMS

Our Environmental Management Systems are ISO 14001:2015 compliant. We work with clients and suppliers to ensure that all our endeavours are strategically and culturally implemented to achieve ecologically sustainable development, and protection of the environment.



MASTER BUILDERS ASSOCIATION OF VICTORIA

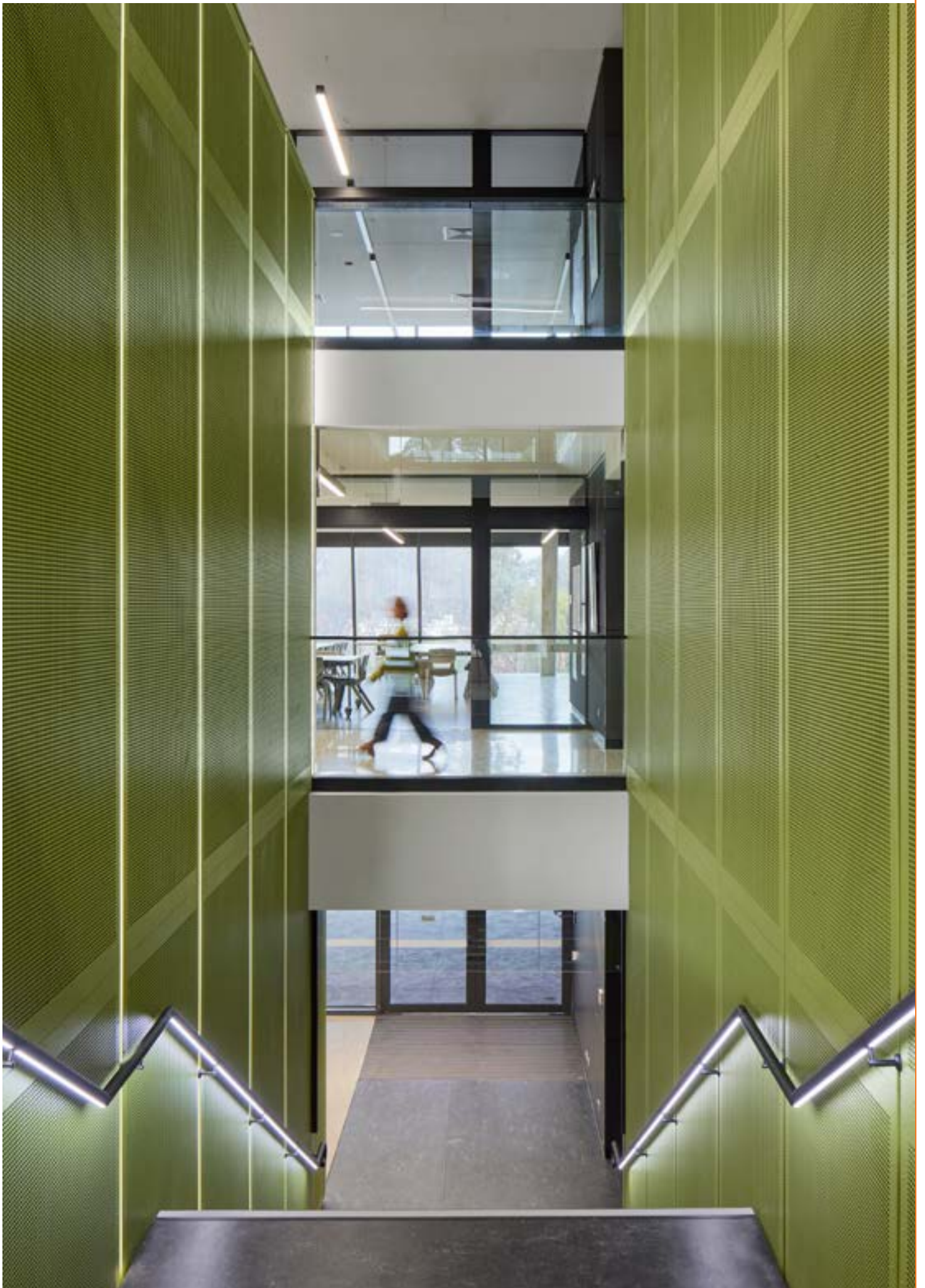
2Construct Pty Ltd have a longstanding affiliation as a member of the Master Builders Association of Victoria (MBAV), with active membership with the Health, Safety and Environmental Committee.



CM3 CERTIFIED

2Construct is certified through the web based Work Health & Safety (WHS) pre-qualification system Cm3. Giving us the ability to manage all aspects of your contractor compliance – online and visible across the whole business to clients.

Furthermore, it helps to facilitate successful, sustainable and ethical partnerships across the constructions industries. A detailed review of their modern slavery policies, processes, and procedures are part of their annual Cm3 prequalification. Giving you greater insight into our supply chain relationships, labour hire policies and employment practices. These procedures are fundamental to improving the way we do business.



YARRA VALLEY GRAMMAR ART, DESIGN AND TECHNOLOGY WING

Let's talk about the social,
environmental and economic
aspects of your next project

Visit us in Balaclava or
call us on 03 9519 0333.
info@2construct.com.au